



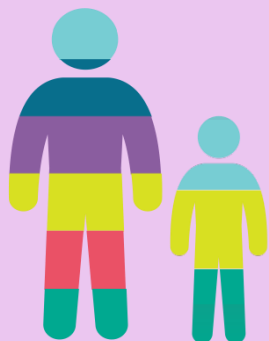
***Increasing Collaboration Around
Social Determinants of Health
October 12, 2017***

Social Determinants of Health



HEALTH-RELATED SOCIAL NEEDS

+ HEALTH



Health-related social needs are found where people live, learn, work and socialize; they impact health outcomes.



ECONOMIC STABILITY

- ACCESS TO LONG-TERM EMPLOYMENT
- ACCESS TO FINANCIAL LITERACY
- ACCESS TO ADULT EDUCATION & JOB TRAINING
- INCREASED ASSETS SUCH AS HOME OWNERSHIP



HOUSING & NEIGHBORHOODS

- ACCESS TO HEALTHY FOODS
- INCREASED QUALITY OF SAFE & AFFORDABLE HOUSING
- IMPROVED ENVIRONMENTAL CONDITIONS



EDUCATION

- EARLY CHILDHOOD EDUCATION & DEVELOPMENT
- ACCESS TO EXTRACURRICULAR ACTIVITIES & MENTORING
- INCREASED HIGH SCHOOL GRADUATION
- ENROLLMENT IN JOB TRAINING OR POST SECONDARY EDUCATION



SOCIAL RELATIONSHIPS

- SOCIAL COHESION
- CIVIC PARTICIPATION
- PERCEPTIONS OF DISCRIMINATION & EQUITY
- INCARCERATION / INSTITUTIONALIZATION



FOOD & NUTRITION

- REGULAR & CONSISTENT ACCESS TO HEALTHY FOODS
- EDUCATION ON NUTRITION & OVERALL HEALTH IMPACTS
- ADDRESSING FOOD DESERTS & INEQUALITIES

Life Transformation Plan

A holistic and individually prescriptive approach that evaluates, educates, guides, inspires and supports people in a comprehensive transformation from a socio-economic status of deficiency to a life of self-sufficiency.



Life Coach

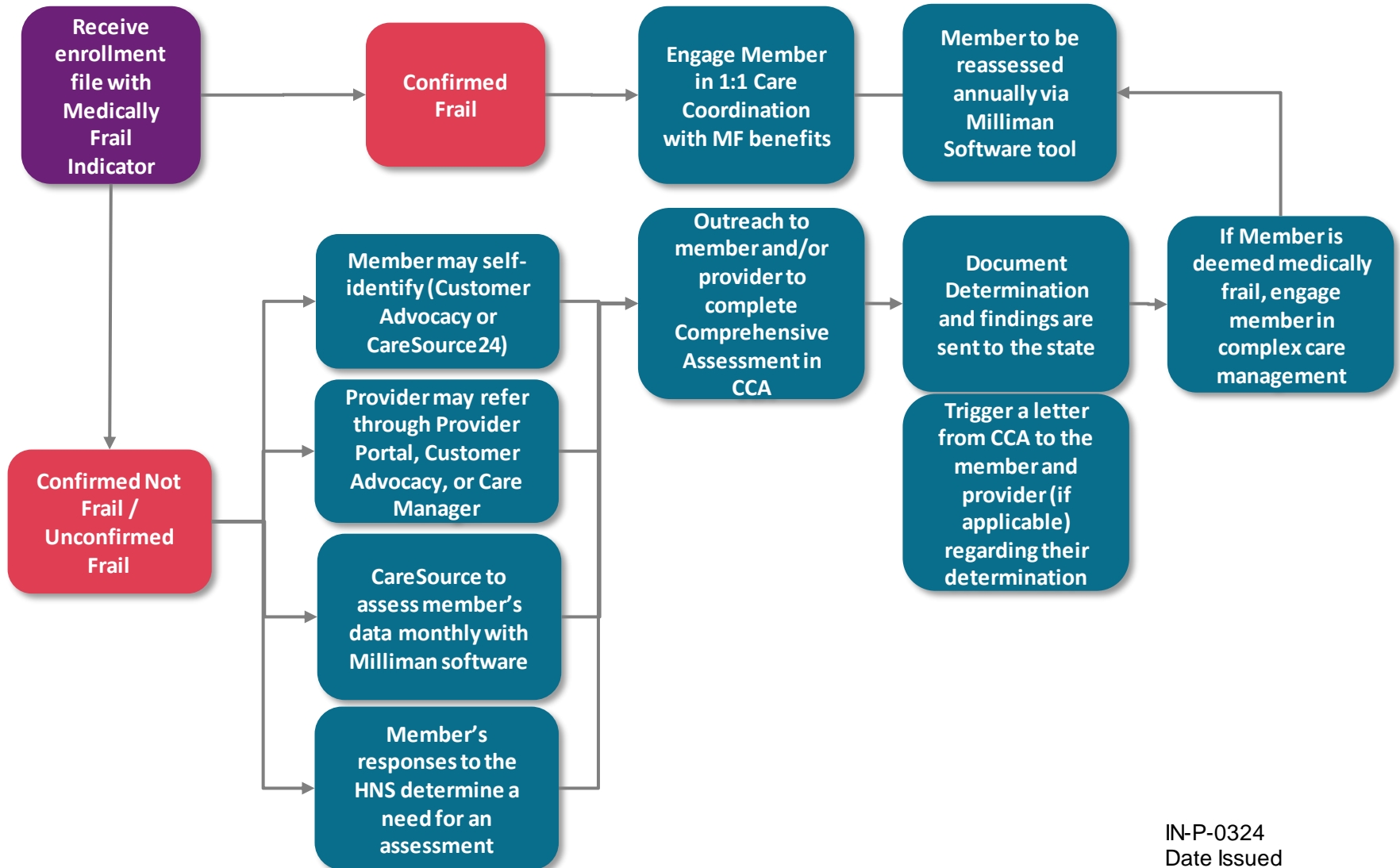
1:1 RELATIONSHIP
INDIVIDUAL LIFE PLAN
COACHING
COUNSELING

 Health Care Affordable child care Adult care In-house health Monitoring Dependent care Dental	 Assessment Holistic life aspects analysis Motivation & commitment quotient	 Stabilization Bus passes Housing
WAGE \$8 \$12-13		
FEDERAL POVERTY LEVEL 65%		
SURVIVING		

GAP

 Education Skill development Customized curriculum Training	 Job Training Job shadowing Align jobs Local & national jobs	 Empowerment Interviewing Skill development Clothing & cosmetics	 Soft Skills Workforce employment support Managing conflicts	 Employment On-going full-time employment	 Financial Assistance Income/expense bridge Loans Scholarships	 Support Mentoring Stress management
WAGE \$20-21 \$28						
100% MEDICAID 138% MARKETPLACE PLAN 160% 200%						
STABLE			THRIVING			

Medically Frail Process



Member referral:

1-844-607-2832

LifeServicesIndiana@CareSource.com

Provider referral:

Medically Frail Fax #

937-487-0131 (include referral form
& supporting documentation)

Keisha Zackery

Community Partner Specialist, JobConnect
CareSource

135 N. Pennsylvania St, Ste 1300

Indianapolis, IN 46204

317-209-4590

Lakeisha.Zackery@caresource.com

Barb Shull

RN Care Manager, Care4U - Indiana
CareSource

135 N. Pennsylvania St, Ste 1300

Indianapolis, IN 46204

317-671-6475

Barbara.Shull@caresource.com